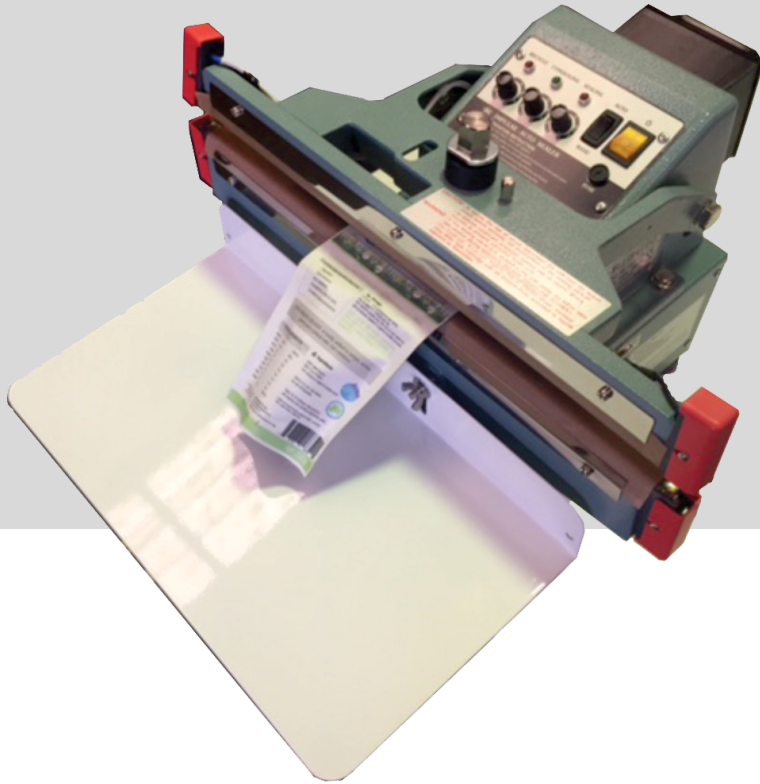


# INNOSEAL P-450

PULSE SEALER

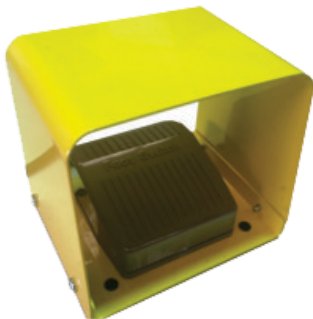


The Innoseal P-450 is a pulse sealer, meaning the element is only energised while the seal jaws are closed. To operate you simply press a switch to close the jaws & engage the sealing it will release automatically.

**PACKWEIGH**  
INNOVATIVE PACKAGING SOLUTIONS

## Features

- Max seal length: 600mm
- Seal width: 10mm
- Heat timer: 0.3 to 2 seconds
- Watts: 840
- It has a foot switch so no heavy pressing on the pedal required to sea.
- Adjustable sealing & cooling times
- Top & bottom heating elements
- Designed for placing on a bench & come with an adjustable working platform.
- Foot switch can be placed in a position to suit operator



## About Packweigh

Packweigh Equipment, design & manufacture as well as import equipment from all over the world, and with a modern workshop and engineering department, can furnish an innovative solution to supply you with equipment to suit your specific needs.

Packweigh Equipment also carries an extensive range of spare parts and has the expertise and staff to service your machinery for smooth and trouble free operation.

**Packweigh Equipment**

[www.packweigh.com.au](http://www.packweigh.com.au) | [sales@packweigh.com.au](mailto:sales@packweigh.com.au)

Ph 07 38231033 | 14 Veronica St Capalaba, QLD, 4157